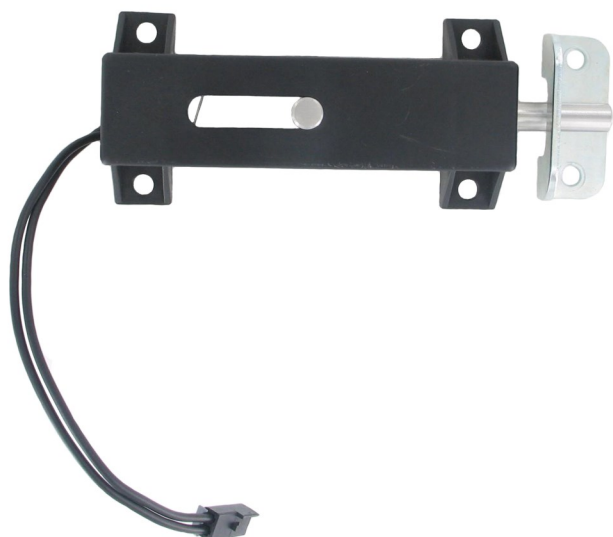


# 590-1100 Emergency Exit Window Latch and Interlock Switch



This sliding bolt security latch/switch is FMVSS 217 compliant for bus window emergency exits. It contains an integrated micro switch that is designed to actuate an audible signal to the driver when the slide latch is locked and the vehicle's ignition is in the "on" position

## **FEATURES/BENEFITS:**

- Self-contained assembly is easy to install and connect
- Assembly is provided with a ball detent to hold the slide bolt in the locked and unlocked position
- Bolt extension is 1.0" (25.4mm)
- Provided with a Delphi connector and a 6.0" (152.4mm) long 18 gauge wire
- Strike/lock plate included
- .31" (7.9mm) diameter stainless steel bolt
- Connector:
  - Connector Body: Delphi P/N 12047662
  - Terminals: Delphi P/N 12047767
  - Connector Lock: Delphi P/N 12047664
- Mating Connector:
  - Connector Body: Delphi P/N 12047663
  - Connector Lock: Delphi P/N 12047665
  - Terminals: Delphi P/N 12047581

## **Global Locations:**

**TriMark Corporation**  
500 Bailey Avenue  
P.O. Box 350  
New Hampton, Iowa 50659  
United States  
Tel: 641-394-3188  
Fax: 641-394-2392  
1-800-447-0343  
www.trimarkcorp.com

**TriMark Europe**  
Cedar Court  
Walker road  
Bardon Hill  
Coalville LE67 1TU  
United Kingdom  
Tel: +44(0)1530 512460  
Fax: +44(0)1530 512461  
www.trimarkeu.com

**TriMark (Xuzhou)**  
Building A5 Jingwu Road  
Xuzhou Economic  
Development Zone  
Xuzhou, Jiangsu  
221004 PR China  
Tel: +86 516 8773 0018  
Fax: +86 516 8773 0058  
www.trimarkcn.com



TriMark. Interactive. Product. Selector



TriMark



TriMark Corporation

**AVAILABLE:**

- Strike/lock plate included

**FINISH:**

- Strike/lock plate: Zinc plated clear chromate

**MATERIAL:**

- Housing: Glass filled nylon
- Bolt: 304 stainless steel

**INSTALLATION:**

- Installs with (4) #10 mounting fasteners (not included)

Individual part dimensions are for reference only. Refer to individual part drawings for complete dimensions, specifications, and installation procedures. Engineering assistance and application drawings are available.

For more information visit  
[www.trimarkcorp.com](http://www.trimarkcorp.com)

